



## Maximum security for your company data!

Setting up a server or the restoration of lost data can be an expensive and time-intensive task for any company. But it is also completely preventable. With the help of continuous images of your Windows systems and of your data you can fall back on previously created images, whenever a loss of data occurs. With O&O DiskImage 6 Server Edition you can create reliable images – also in the network.

### New and known functions

Besides the continuous maintenance and enhancement of the existing program components, version 6 comes with some new and helpful features. At a glance, the control function visualizes which drives have never been imaged yet and which images need to be updated. With just a few clicks, you can create the necessary images so that you are well protected against data loss. The new file backup function, the technically updated Start CD, and the enhanced possibility for the integration of ISO files complement the scope of features already offered by O&O DiskImage 6.

### File Backup (NEW)

O&O DiskImage enables the backup and restoration of individual files and folders. If you need to access the files and folders from the backup, you can unzip and use them either with O&O DiskImage or a compression program such as WinZip. You don't necessarily need to O&O DiskImage to unzip the OBK-file. Compared to a drive image, the file backup doesn't store drive information.

### M.I.R. - Machine Independent Restoration

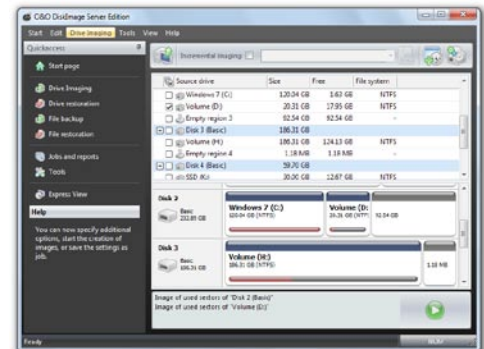
The Machine Independent Restoration enables a system restoration onto machines with different hardware setups. This means a system image or a clone cannot only be restored onto Server and Desktop PCs with identical hardware, but also onto hardware where the processor or motherboard has been changed, for instance.

### Imaging with no downtime

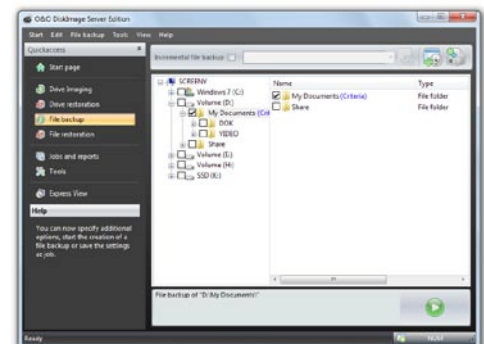
O&O DiskImage Server Edition includes a mechanism, which ensures that the imaged data corresponds exactly to the moment of the begin of the imaging process: changes to the data set by the user or applications will not influence a running imaging process. The existing file system and the application environment have therefore no influence on the process. Only by harnessing this technology can consistent system images be created, while at the same time ensuring that the system runs without interruption, and remains continuously available.



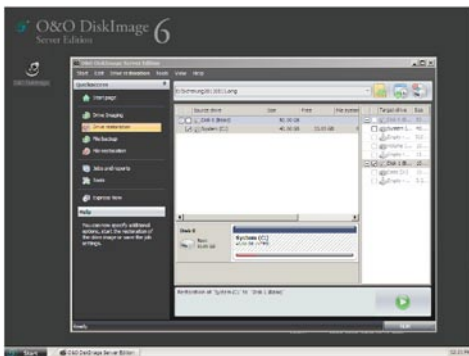
Startpage: O&O DiskImage, Controllcenter



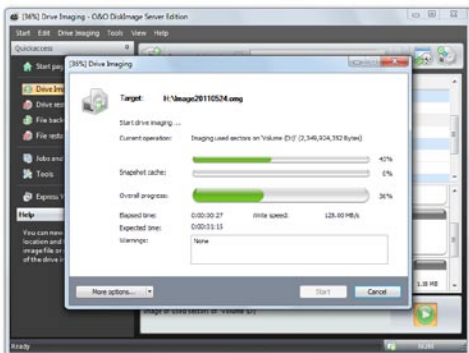
Select drive for imaging



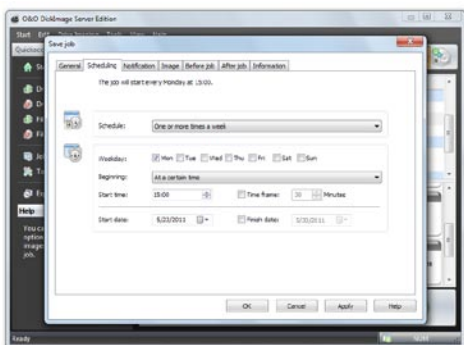
File Backup



Start O&O DiskImage with boot media



Imaging prozess (empty snapshot cache)



Job assistant with schedule

### Specially designed for server environments

O&O DiskImage Server Edition was specifically designed to make the most modern systems more efficient, without unnecessarily straining older hardware due to a high resource use. O&O DiskImage Server Edition fully supports 64 bit server operating systems, dynamic data volumes, and of course fail-safe RAID configuration.

### Automation, scripting and reporting

A comprehensively configurable time control enables you to comfortably create automated images with O&O DiskImage. In addition, O&O DiskImage Server Edition can be controlled completely over script commands. Detailed reports are then compiled, informing you as to the results of every procedure or activity.

### Choice of various types of images

O&O DiskImage lets you perform full and differential/incremental imagings. Full imaging allows you to choose between a space-saving image of used sectors and an all-inclusive forensic imaging which can be used when restoring data - for example, in conjunction with O&O DiskRecovery. An image of the changes lets save you space, as you image only those data sectors which have changed since the last imaging procedure. All important composition information is saved in every image file. Even when single image files are lost, you can still carry out a partial data restoration of data that is still available.

### ISO file can be mounted as virtual drive

You have the possibility to mount an ISO file as a drive. The ISO file is treated as a separate drive. You can view and use its contents using Windows Explorer. This can be of help, when you download an ISO file for a program installation. Instead of first burning the ISO file on a CD, to run the installation, you can now simply mount ISO file as a drive using O&O DiskImage, start the setup and run the installation.

### System recovery with the boot media

Our BareMetal technology enables you to resurrect a system using O&O DiskImage without having to previously install it. To achieve this, we have placed a bootmedium at your disposal. The boot media is based on Windows Server 2008 R2 and contains all the standard drivers from Windows. Thanks to the Wizard, additional drivers such as for controllers or network cards can also be loaded after starting. The additional system rescue tools even give you the chance to restore the original system and identify errors.



### Splitting Images

Images can be split into several files. For example, you can limit the size of an image to a maximum of 700 MB. An image of your drive can then be composed of several image files of each up to 700 MB. An automatic split is also possible, if for example the target drive is full or the maximum file size of the file system has been reached.

### Virtual hard disks (VHD)

To make working with Microsoft Virtual PCs (VPC) easier, you can convert images to virtual drives (VHD). The converted image can then be mounted as a virtual drive on the VPC, with no need for installing O&O DiskImage there. Similarly, virtual hard disks (VHD) can be converted to Images (OMG).

### E-mail notification on activity status

The e-mail notification function is an option you can select to be kept informed of the progress of jobs or activities. You will also be notified of any errors so that you can act quickly to resolve them.

### Managing O&O DiskImage in the network

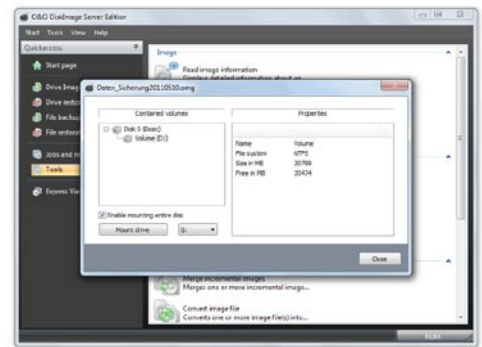
The new O&O DiskImage Server Edition supports you with the help of the O&O Enterprise Management Console to create images of network computers. In just a few steps, you can install the O&O DiskImage Workstation Edition or Server Edition in the network and experience a new way of working. We will gladly consult you on the possibilities of how to apply the O&O Enterprise Management Console in your company. Just contact us!

### Made in Berlin

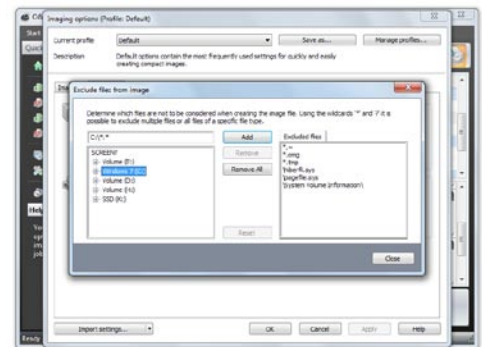
All O&O products are developed and perfected in Berlin, Germany. We have licensed parts of the Windows operating system specifically for O&O DiskImage, to avoid unpleasant surprises when restoring data and thus ensure a maximum of compatibility. We take care of our customers, since we know how important they are for us. And what's more, we've been doing this for over ten years now! You can find further information on our Homepage [www.oo-software.com](http://www.oo-software.com).

### System Requirements

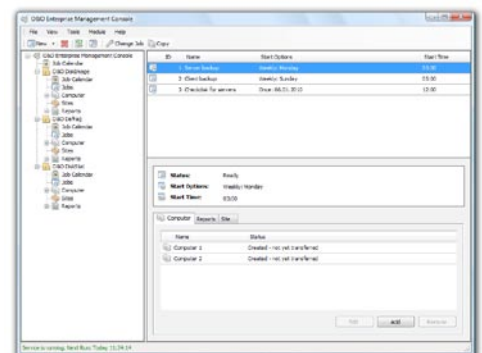
- Minimum 1 GB RAM recommended
- 30 MB free hard disk space
- 32-bit/64-bit support
- From Windows® 2000 to Windows® Server 2008 R2 (all Editions)



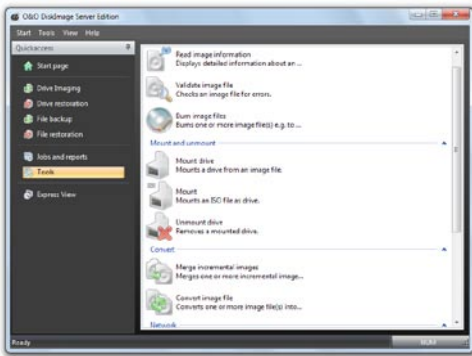
Mount drive



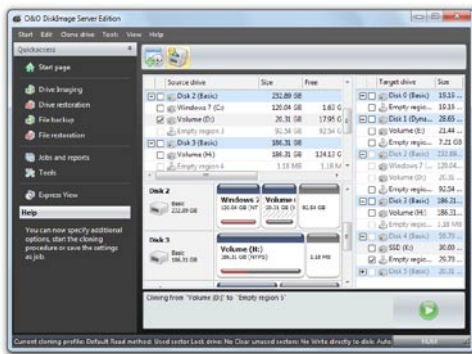
Exclude files from imaging



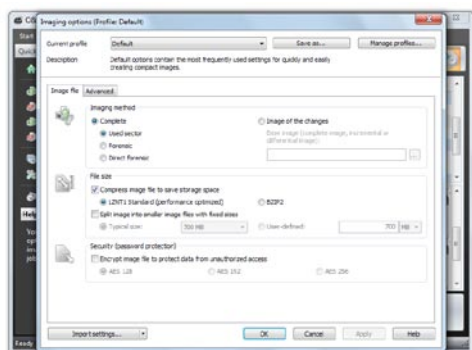
Manage O&O DiskImage across the network



Additional functions in the toolbar



Duplicate drives



Options: select an imaging method

## Highlights

### Image

- Image an entire computer with the push of a button
- Image system and data drives
- Clone drives and entire disks
- NEW: File backup: image and restore individual files and/or folders
- NEW: Monitoring and warning of security risks
- Image only used sectors
- Incremental/differential images: backup only the changes
- Forensic and Direct Forensic images
- Save images to network drives
- Time Schedule for automatic, regular images
- Advanced burning on CD/DVD/Blu-ray/HD-DVD

### Restoration Features

- Easily restore files, folders, drives and disks
- ENHANCED: Restoring onto different hardware (M.I.R.)
- NEW: Boot media is based on Windows 7 (also compatible with Vista and XP)
- Boot media contains extra system rescue tools
- Direct restoration from virtual disks (VHD)

### Tools

- High-performance compression and encryption of images
- Support for dynamic and GPT volumes
- Exclude certain files and/or file types
- NEW: Mount ISO file as a drive
- Check drives and images for errors
- Works with Microsoft Virtual PC Disks (VHD)
- Advanced report management and e-mail notifications
- Control and management via the local network possible (Only valid in combination with the O&O Enterprise Management Console)
- NEW: Usage of the Volume shadow service (VSS) instead of own filter driver